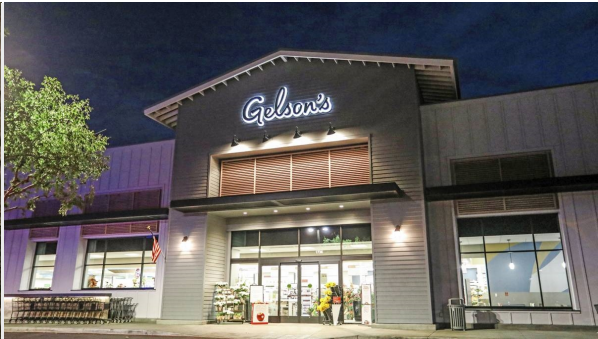
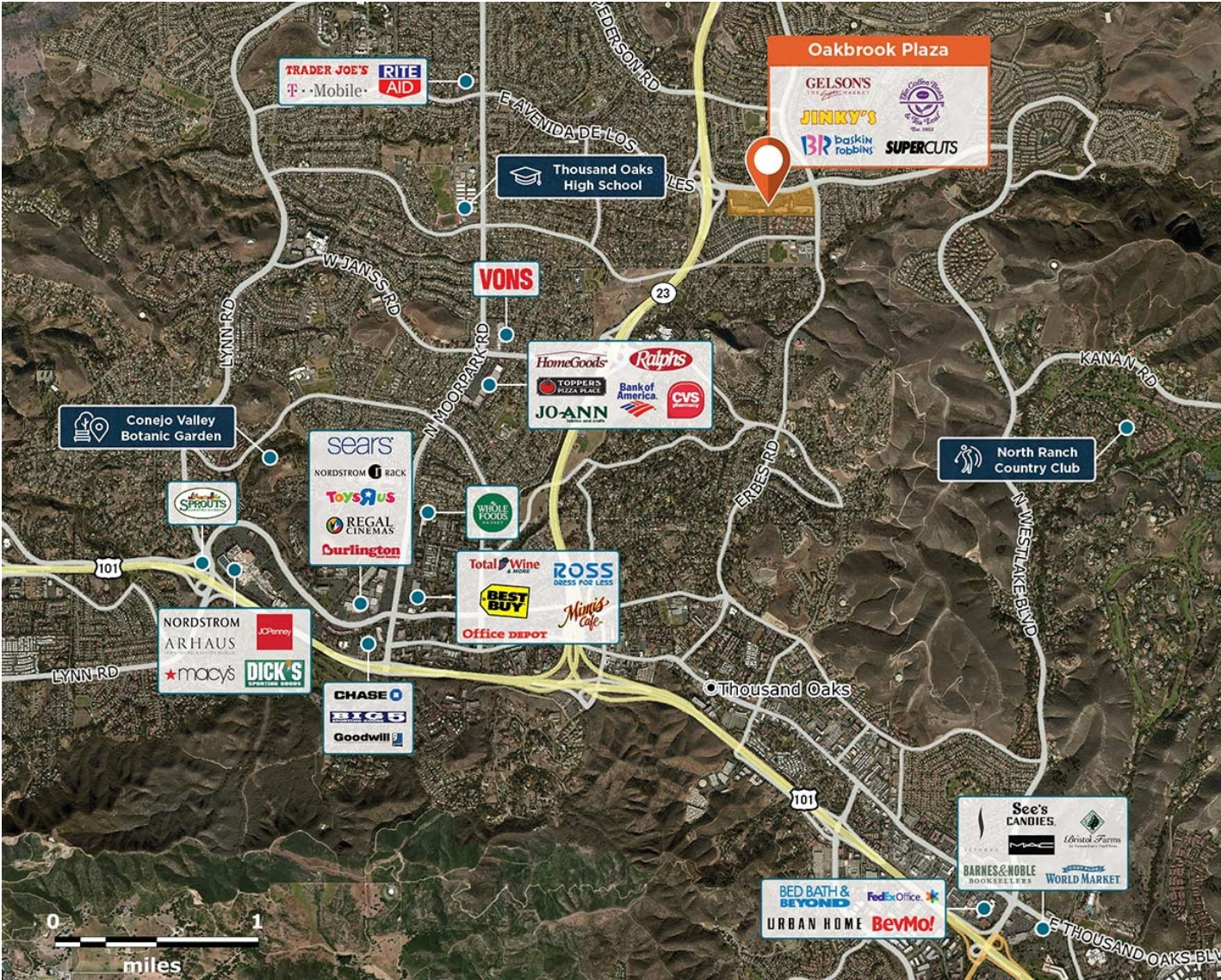


# Oakbrook Plaza

📍 1724-1772 Avenida De Los Arboles, Thousand Oaks, CA 91362



High traffic center in an affluent community with great accessibility near the 23 Freeway off ramp.

**Center Size: 83,344**  
**Spaces Available: 6**

**Within 3 Miles**

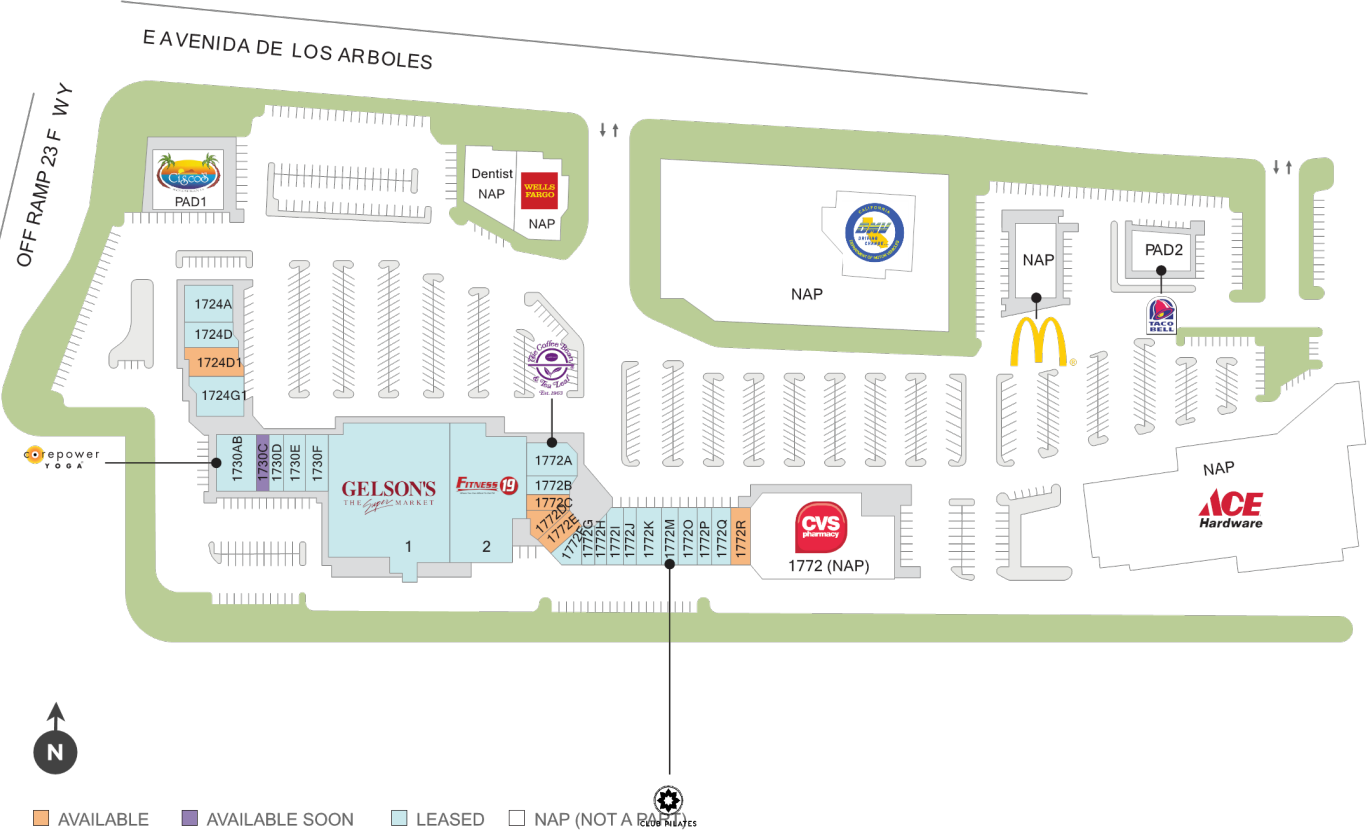
Population	<b>71,330</b>
Avg. Household Income	<b>177,999</b>
Avg. Home Value	<b>\$1,039,423</b>
Annual Visits	<b>2,722,771</b>
Vehicles Per Day	<b>31,300</b>

This site plan is not a representation, warranty or guarantee as to size, location, identity of any tenant, the suite number, address or any other physical indicator or parameter of the property and for use as approximated information only. The improvements are subject to changes, additions, and deletions as the architect, landlord, or any governmental agency may direct or determine in their absolute discretion.

# Oakbrook Plaza

📍 1724-1772 Avenida De Los Arboles, Thousand Oaks, CA 91362

**Center Size: 83,344**



SPACE	TENANT	SF
1724D1	AVAILABLE (Fitness Space)	2,807
1772C	AVAILABLE	800
1772D	AVAILABLE	600
1772E	AVAILABLE	1,575
1772R	AVAILABLE (Fitness Space)	1,500
1730C	AVAILABLE SOON	1,026
1	GELSON'S MARKETS	35,289
1724A	CAFE VIVI	3,696
1724D	GAMES WORKSHOP	900
1724GI	AMECI PIZZA & PASTA	3,060
1730AB	COREPOWER YOGA	3,000
1730D	TIFA CHOCOLATE & GELATO	1,213
1730E	C&J TAEKWONDO	1,575
1730F	PLAZA CLEANERS	1,350
1772	CVS	0
1772A	COFFEE BEAN & TEA LEAF	1,400
1772B	SOLE SOUPS	800
1772F	ANIMAL HOSPITAL	2,000
1772G	LASERAWAY	1,650
1772H	SUPERCUTS	1,250
1772I	JUGO ORGANICS	900
1772J	WATERIA	900
1772K	SUBWAY	960
1772M	CLUB PILATES	2,040
1772O	JAZZY NAILS & SPA	1,500
1772P	BASKIN ROBBINS	1,500
1772Q	EUROPEAN WAX CENTER	1,500
2	FITNESS 19	8,553

1 of 1

This site plan is not a representation, warranty or guarantee as to size, location, identity of any tenant, the suite number, address or any other physical indicator or parameter of the property and for use as approximated information only. The improvements are subject to changes, additions, and deletions as the architect, landlord, or any governmental agency may direct or determine in their absolute discretion.